

Executive Summary

Kafka is a complex beast with 190+ configuration options. Amongst them all, there are millions of potential permutations.

As our customers have seen, the correct configuration can be the difference between a 50% lower cost bill and one that is not. We have success stories that have reduced their Kafka traffic by up to 97%!

Kafka optimization requires an end-to-end solution that monitors the (potentially thousands) of clients connecting to the cluster as well as the dozens of brokers that the cluster consists of, and holistically decides the most optimal configuration strategy.

“Superstream took a huge load off our plates. We used to spend hours tuning Kafka and manually managing cost optimizations. Now it just works in the background—smart, safe, and way more efficient.”

Ilay Simon, Sr. DevOps Engineer // Orca Security

1. Why Superstream

- a. **Fine-grained client-specific optimization:**
Superstreams optimizes per-client, per-topic and per-cluster, ensuring each component in your workload gets a tailored configuration leading to the most optimal solution
- b. **Universal Compatibility:**
Superstreams works seamlessly across all Kafka vendors and architectures (self-managed Apache Kafka, Confluent, MSK, Redpanda, Warpstream, and more)—no code changes required.
- c. **Drastic Data Transfer Reduction:**
Through tailored compression and batching, Superstream customers have reduced their bandwidth by up to 97%, significantly slashing their cross-AZ and inter-region data transfer bandwidth and costs, while also improving per-client throughput
- d. **Massive Infra and Usage Cost Savings:**
Superstreams' intelligent compression, routing and specific access pattern

turning can slash streaming platform costs by up to 75%

- e. **Autonomous & Continuous Optimization:**
Superstreams runs entirely autonomously - there are no knobs to turn and no dashboards to babysit. Deploy once and benefit continuously as your Kafka gets smarter.

2. Products

- **SuperClient for Kafka:** Auto-Tunes Your Kafka Clients For Efficiency & Governance.
It eliminates guesswork by tuning each client's config to its unique workload, driving performance gains, cost savings, and reduced network usage.
- **SuperCluster for Kafka:** Keeps Your Kafka Clusters Lean & Mean.
It continuously cleans up and optimizes your cluster-level resources, making sure you pay for and store only what you use and need.

3. Key Features & Benefits

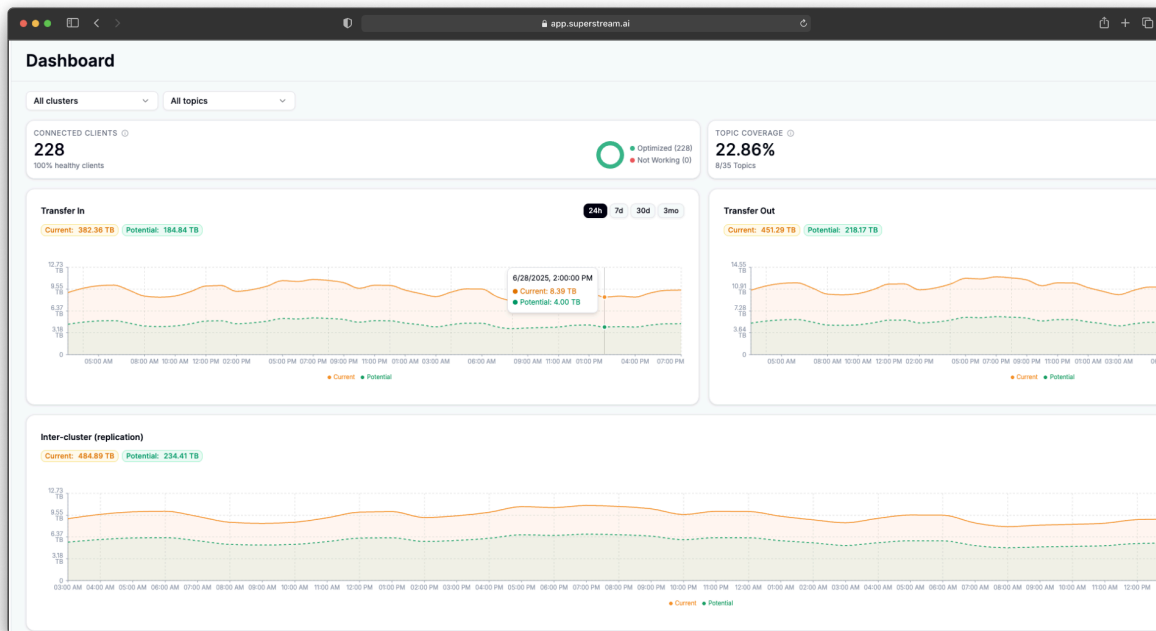
- a. **Substantial Cost and Traffic Reduction:** Superstream optimizes Kafka clusters to achieve up to 97% reduction in network traffic and up to 50% cost savings by aligning cluster resources with workload demands.
- b. **AI-Driven Automation:** The platform autonomously manages Kafka operations, including configuration tuning and client optimization, minimizing the need for manual intervention.
- c. **Enhanced Visibility and Control:** Superstream provides comprehensive insights into Kafka cluster health and performance, enabling teams to enforce best practices and make informed decisions without requiring infrastructure migration.
- d. **Flexible Deployment Options:**
 - i. **Bring Your Own Cloud (BYOC):** Deploy Superstream agents within your existing cloud infrastructure using Helm charts, ensuring data remains within your environment.
 - ii. **Fully Managed Service:** Utilize Superstream's managed solution for seamless integration with platforms like AWS MSK, Confluent Cloud, and self-hosted Kafka clusters.
- e. **Client Optimization Tools:** The open-source superstream library dynamically adjusts producer configurations based on topic-specific recommendations, requiring no code changes.
- f. **Customizable Notifications:** Configure lightweight notifications through various channels, including Slack, to stay informed about actions and changes across your Kafka clusters.
- g. **Robust Security and Compliance:** Superstream supports multiple authentication methods, including API keys, OAuth, and role-based access control (RBAC),

ensuring secure integration with enterprise systems.

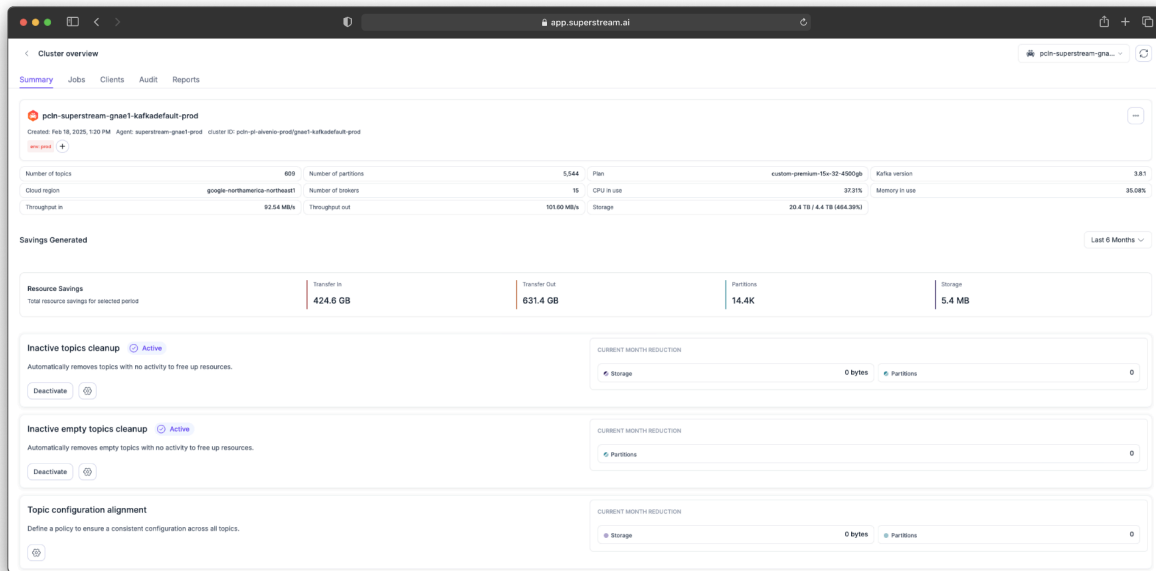
4. Specifications

- Required permissions can be found here:
<https://docs.superstream.ai/getting-started/option-1-byoc/step-1-preparations>
- Prerequisites for local agent deployment can be found here:
<https://docs.superstream.ai/getting-started/option-1-byoc/step-1-agent-deployment>
- Security & legal hub can be found here:
<https://docs.superstream.ai/security-and-legal/processed-data>

5. Examples



SuperClient Dashboard



SuperCluster Dashboard

6. Compliance

- ✓ **SOC 2 Type 1 and 2:** Superstream meets the stringent requirements of Service Organization Control (SOC) 2, both Type 1 and Type 2. This ensures that the platform's security, availability, processing integrity, confidentiality, and privacy of customer data align with the American Institute of Certified Public Accountants (AICPA) standards.
- ✓ **ISO 27001:** Superstream aligns with ISO 27001, a globally recognized standard for information security management systems (ISMS). This certification indicates a commitment to a systematic and ongoing approach to managing sensitive company and customer information.
- ✓ **GDPR:** Compliance with the General Data Protection Regulation (GDPR) underscores Superstream's dedication to data privacy and protection by European Union regulations. This includes ensuring user data rights and implementing appropriate measures for data handling and processing.

7. Pricing

SuperClient for Kafka and SuperCluster for Kafka are available under two pricing tiers (For each product).

SuperClient:

1. **Observability Tier:** Starts at **\$400** per cluster per month
 - This tier provides comprehensive visibility into Kafka performance and client configurations, including:
 - Optimal producer configuration identification
 - Exploration of key data transfer metrics
 - Detection of misconfigured client properties
 - Monitoring and alerting capabilities
 - Chargeback support
2. **Observability + Automation Tier:** Starts at **\$1,000** per cluster per month
 - In addition to all features in the Observability tier, this tier introduces automated remediation and optimization:
 - Auto-optimization of producers' configurations
 - Automatic fixing of misconfigured clients
 - Full API access for integration and extensibility

SuperCluster:

1. **Observability Tier:** Starts at **\$400** per cluster per month
 - This tier equips teams with full visibility into Kafka topic and partition utilization, policy misconfigurations, and associated cost insights:
 - Identification of unused topics and partitions
 - Misconfigured topic policies detection
 - Integrated cost explorer for cluster cost visibility
2. **Observability + Automation Tier:** Starts at **\$1,000** per cluster per month
 - This tier extends Observability with powerful automation to optimize resource usage and maintain policy hygiene:
 - Auto-scaler for AWS MSK and Aiven environments
 - Automated cleanup of unused topics
 - Auto-remediation of misconfigured topic policies

8. Happy Customers

Booking.com

priceline®

 **Playtika**

eToro

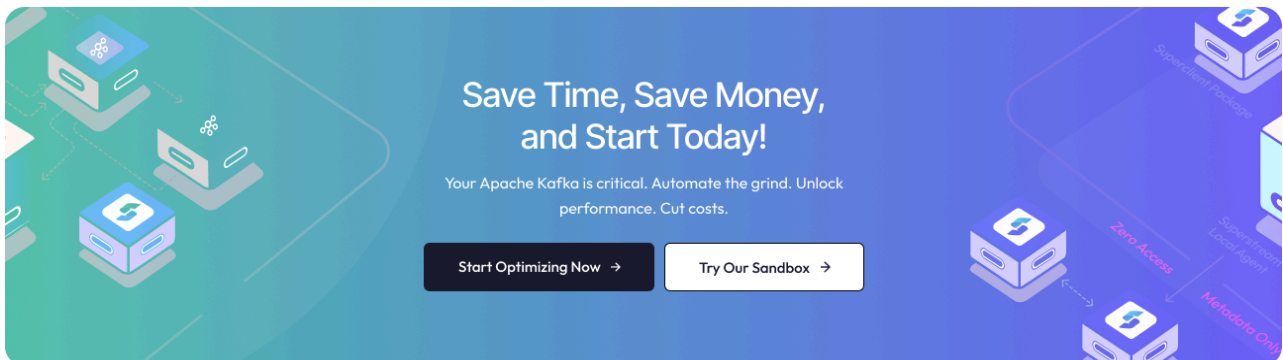
orca
SECURITY

SOLIDUS
LABS 

"Superstream took a huge load off our plates. We used to spend hours tuning Kafka and manually managing cost optimizations. Now it just works in the background—smart, safe, and way more efficient." **Ilay Simon, Sr. DevOps Engineer // Orca Security**

"We plugged Superstream in, and within days, it started surfacing config issues and cost sinks we had no idea existed. The auto-tuning is legit—performance went up and our network overhead dropped noticeably." **Shem Tov Fisher, Kafka Staff Engineer // Solidus Labs**

"I was skeptical at first, but Superstream quickly proved its value. It understands our workload patterns better than we do and keeps our Kafka lean without us lifting a finger. It's like having another engineer on the team." **Ami Machluf, Data Engineering TL // eToro (\$ETOR)**



**Save Time, Save Money,
and Start Today!**

Your Apache Kafka is critical. Automate the grind. Unlock performance. Cut costs.

[Start Optimizing Now →](#) [Try Our Sandbox →](#)

Labels on the right side of the banner: Superstream Package, Superstream Local Agent, Zero Access, Metadata Only.